

ABOUT QUARRY PARK

Quarry Park is the large, mixed use new community by Remington Developments that includes not only a variety of residential housing units, but office and retail space. Parks and paths are numerous and the

community embraces Western European architecture with its distinctive streetscapes with ample detailing on exteriors of homes.

— Marty Hope

**newhomes
show home**

Classic approach to modern living

Bordeaux by Cardel Homes

KATHY MCCORMICK
CALGARY HERALD

Classic tradition never goes out of style, but it can get a tweak to set it up for today's modern family.

That's just what Cardel Homes has done with its elegant Bordeaux two-storey home in Quarry Park.

Right from the moment you see the 2,640-square-foot home, you know it will be interesting.

The whole front facade is covered with stone tile that resembles the old-world sandstone mansions of years past.

A faux-balcony is above the covered entrance archway and large windows are gridded in symmetrical squares.

Inside, the home has cream doors that are tall with flat detailing and ornate diamond-like round knobs. Dark-stained rustic wide-plank maple floors provide a contrast

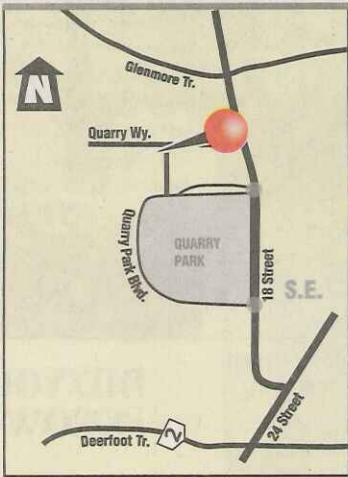
to the cream and the light grey on the walls.

Down the hall from the spacious foyer, the half bath is to the right, followed by the

stairs. Square cream-coloured spindles are topped by dark-stained railings.

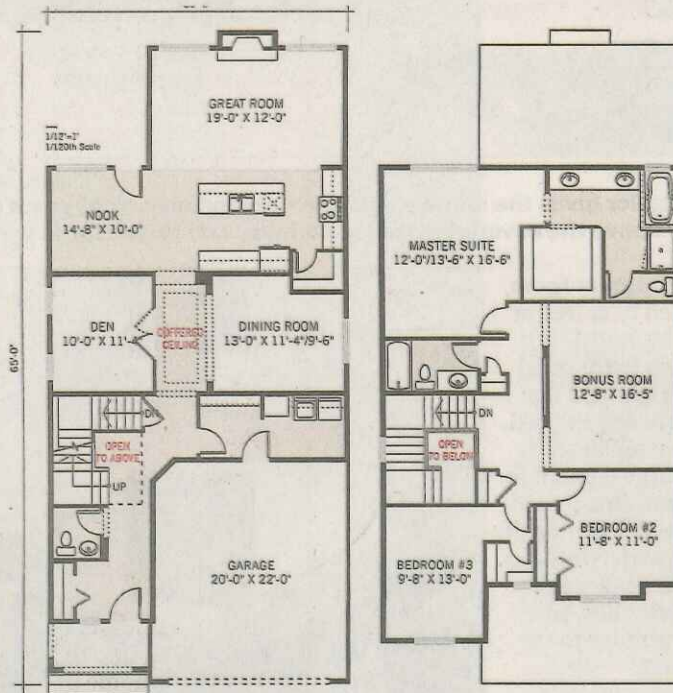
A door on the right leads to the garage entrance and mud room with built-in locker-styled storage, then that, in turn leads to the laundry room.

SEE UNIQUE, PAGE I4



Kathy McCormick, Calgary Herald

The home's L-shaped kitchen has cream cabinets and cream harlequin-styled glossy backsplash tiles.



Courtesy Cardel Homes

The main floor of the Bordeaux floor plan has 1,298 square feet and includes a den, great room, kitchen and nook, dining room and garage. The upper level has 1,302 square feet, with two bedrooms and bonus room and a master suite.

UNIQUE: Lighting, tiles give home panache

Ahead, the hall has the formal dining room on the right with an additional butler's pantry entrance to the kitchen and a unique chandelier.

Double solid doors on the other side enter into the den, a good size at 10 feet by 11 feet, four inches.

CALGARYHERALD.



VIRTUALTOURS

See our website for virtual tours of other show homes.

The back of the home has the L-shaped kitchen on the right, with cream cabinets and cream harlequin-styled

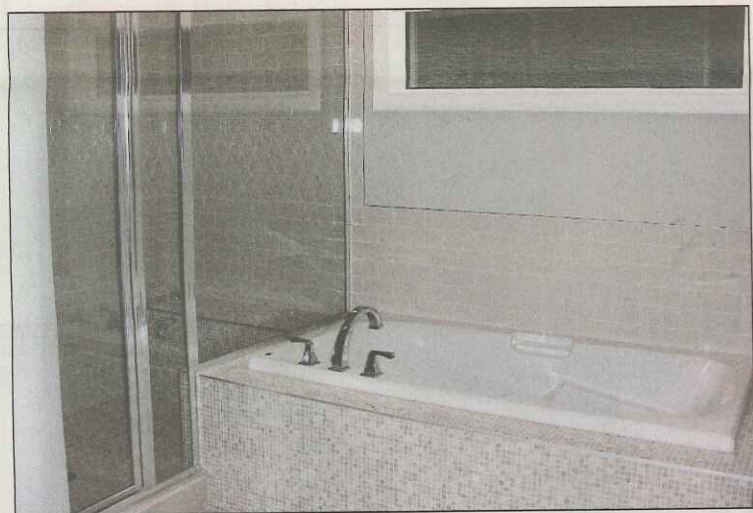
glossy tiles as the backsplash, which is highlighted with under-cabinet lighting.

The top cupboards are small squares with window doors to add interest.

Stainless-steel appliances include a four-burner gas stove. The granite counter top has black, brown and beige swirls which continue to the long rectangular island with the flush breakfast bar along the outside edge.

The nook on the other side opens to the generous deck out back.

The great room has a formal fireplace that gives the home an estate look with its flat-panelled mantel and sides in the same cream material that is used on the baseboards.



Mosaic and glossy tiles surround the ensuite's large soaker tub and glass shower.



Photos, Kathy McCormick, Calgary Herald

The stone tile exterior gives the home an old-world-mansion look of years gone by. It is accented by the faux-balcony above the covered entrance archway and grilled large windows.

DID YOU KNOW

BUILDER: Cardel Homes.

DEVELOPER: Remington Developments.

AREA: Quarry Park in the southeast quadrant.

PRICE: The show home is approximately \$670,000 with lot and GST and several optional layouts, including the butler's pantry, the raised 12-foot ceiling in the great room, nine-foot ceilings on the second floor, and an extension of the great room.

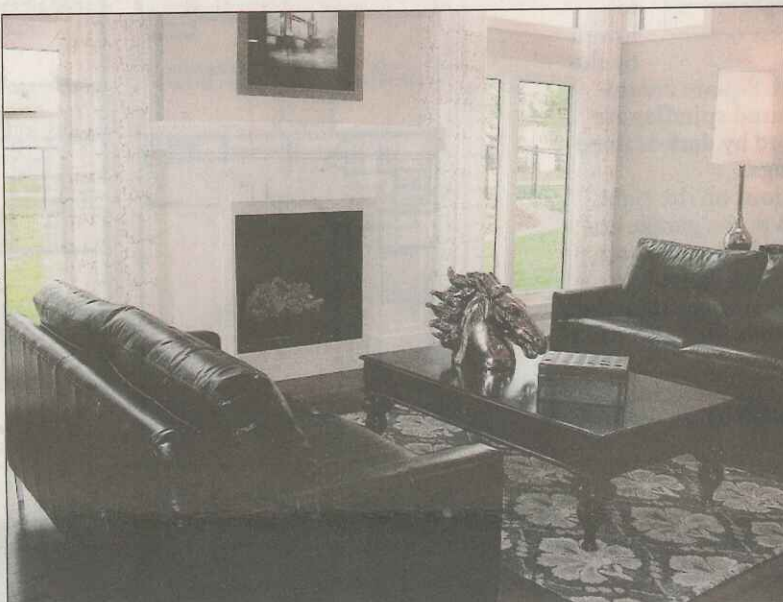
HOURS: Open from 2 p.m. to 8 p.m. Monday to Thursday and noon to 5 p.m. weekends and holidays.

DIRECTIONS: Take Glenmore Trail east of Deerfoot Trail to 18 Street S.E., turn right and continue through Riverbend to Quarry Park. Turn right at Quarry Park Boulevard, then take the first right again.

The ceiling in the great room has been expanded to 12 feet in height.

Upstairs, the two extra bedrooms are to the right and the bonus room is between the bedrooms and the master suite.

The master is large enough for the over-sized furniture, including a king-sized bed. The ensuite has a long vanity with two sinks, a long rectangular soaker tub built in with mosaic tiles, and a huge shower with tiles to the ceiling and a bench.



The great room has double-decker windows flanking the elegant fireplace.



The formal dining room leads into the kitchen and includes a unique chandelier and butler's pantry.

ABOUT THE BUILDER

Cardel Homes is a family-owned business that has been in Calgary since 1973 and is currently in 13 communities with single-family homes. A multi-family division is also active in the city with several projects. Cardel is building in Ottawa, Tampa Bay and Denver as well. The builder is synonymous with charity support with many philanthropic endeavours over its history. These include Cardel Place, the regional recreation centre for the north central district, helping fund the new private sports school, The Academies, and a charity golf tournament for Dreams Take Flight.